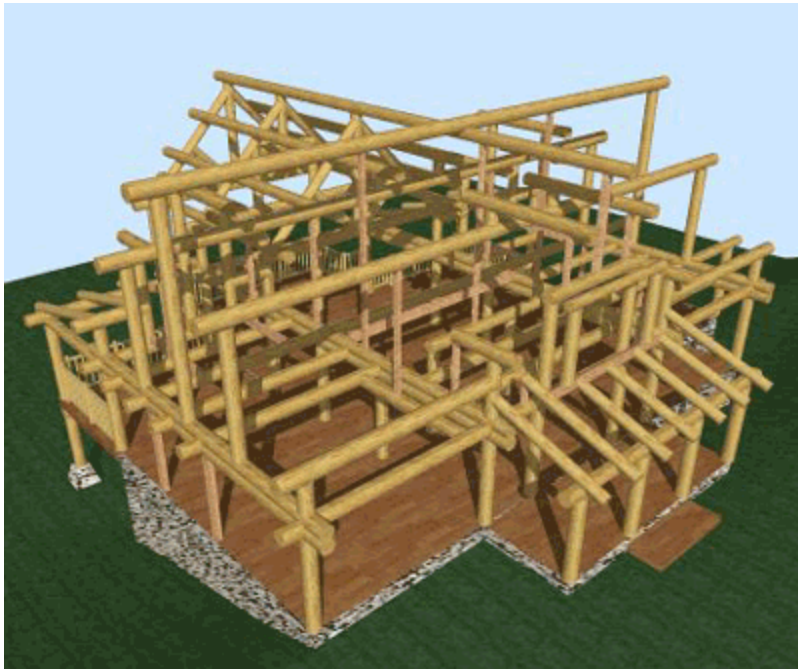

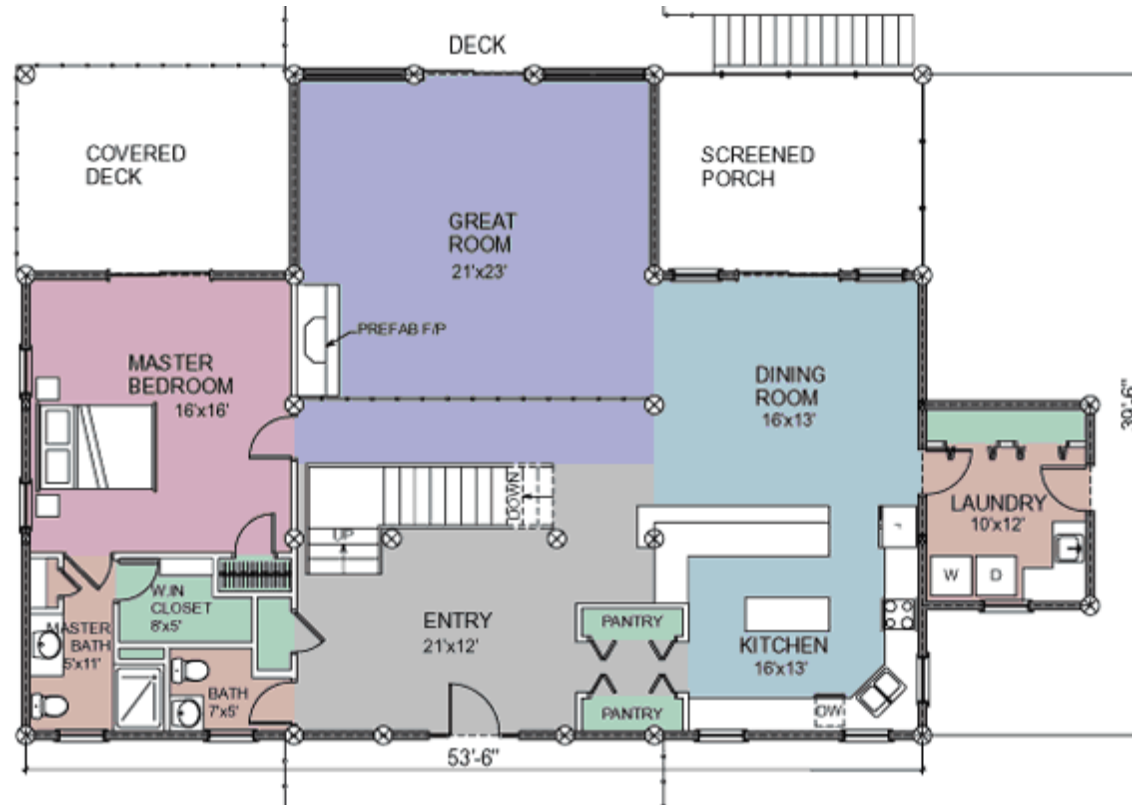



Selfridge



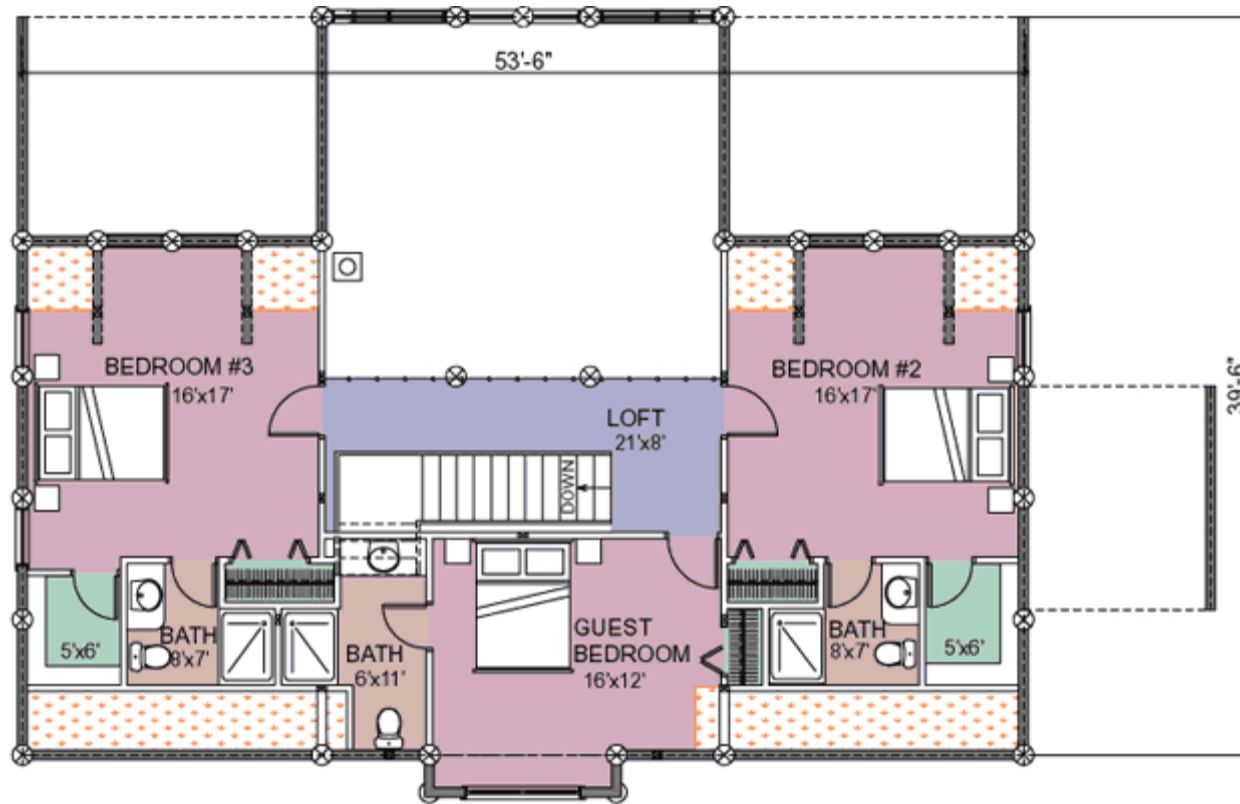
 <p>Cascade Handcrafted Log Homes</p>	Design:	Selfridge	Area:	2,830 sq ft (263 m ²)
	Designed by:	RCM CAD Design	Features:	Scribed log floor joists, scribed log porch rafters, handcrafted log railings.
	Log Home Construction Style:	Post and Beam		


Selfridge: Plan of 1st Floor



 <p>Cascade Handcrafted Log Homes</p>	Design:	Selfridge	Area:	2,830 sq ft (263 m ²)
	Designed by:	RCM CAD Design	Features:	Scribed log floor joists, scribed log porch rafters, handcrafted log railings.
	Log Home Construction Style:	Post and Beam		

Selfridge: Plan of 2nd Floor



 <p>Cascade Handcrafted Log Homes</p>	Design:	Selfridge	Area:	2,830 sq ft (263 m ²)
	Designed by:	RCM CAD Design	Features:	Scribed log floor joists, scribed log porch rafters, handcrafted log railings.
	Log Home Construction Style:	Post and Beam		