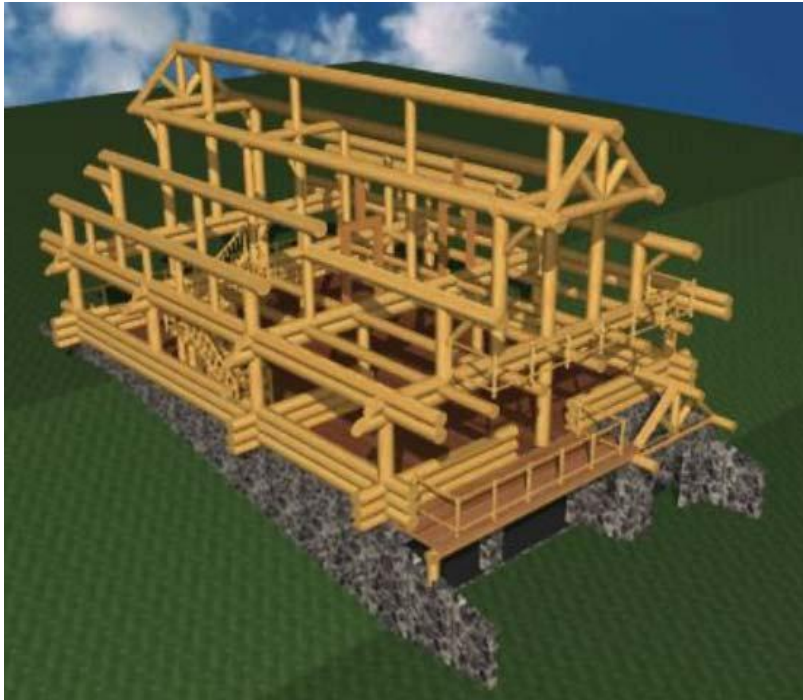

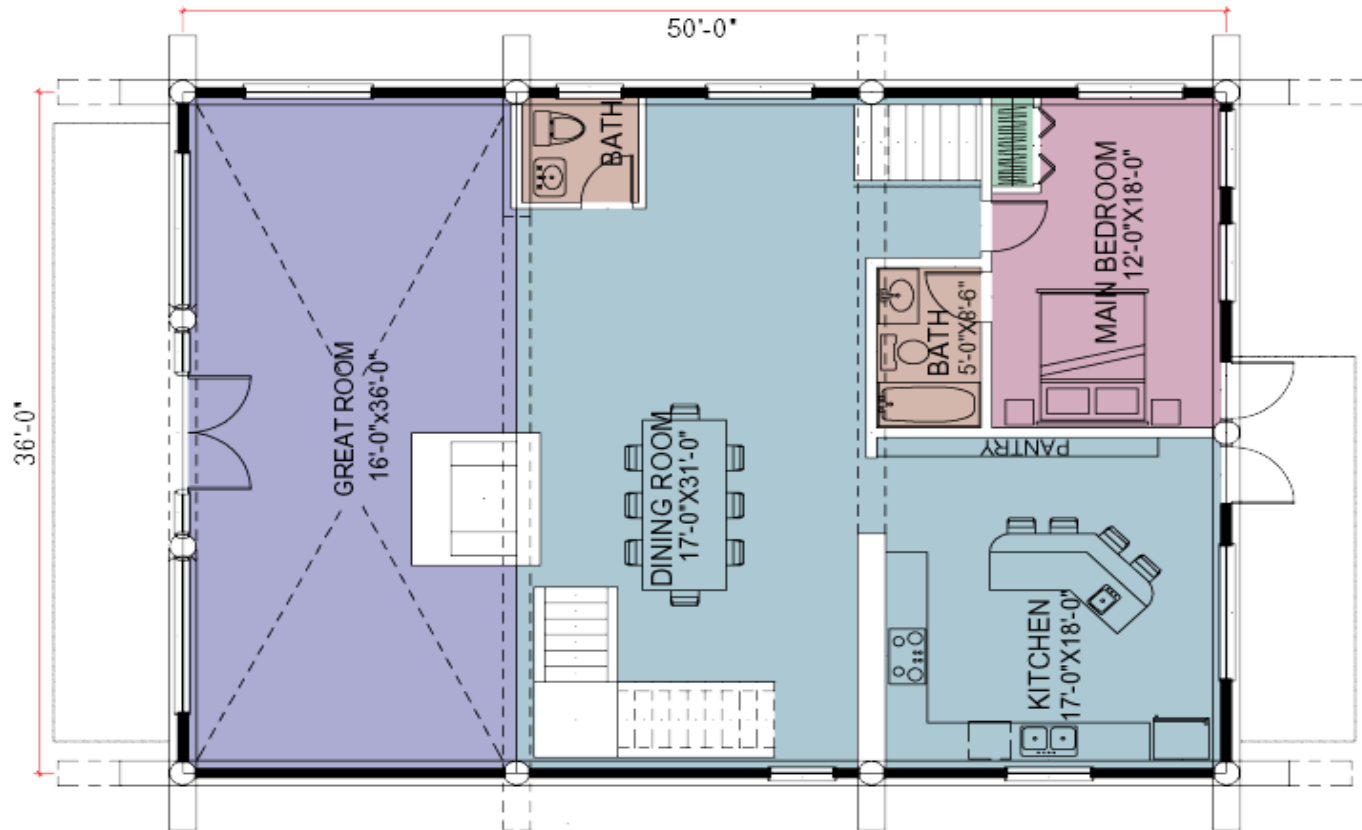



Snoqualmie



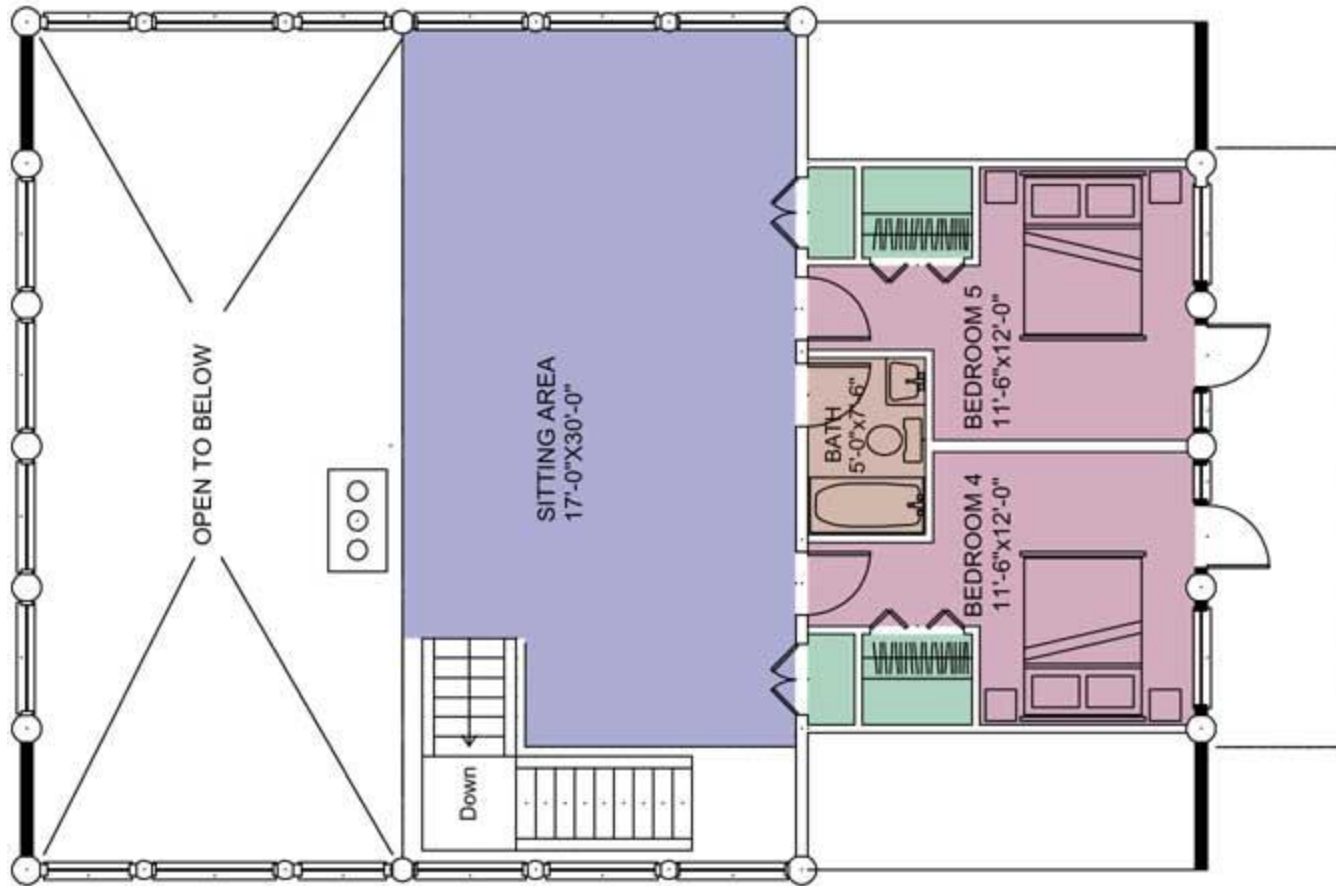
 <p>Cascade Handcrafted Log Homes</p>	Design:	Snoqualmie	Area:	2,670 sq ft (248 m ²)
	Designed by:	RCM CAD Design	Features:	Part full-scribe, part post and beam. Large open floor plan. Balcony under knee-braced roof extension. Lots of gingerbread.
	Log Home Construction Style:	Hybrid		


Snoqualmie: Plan of 1st floor



 <p>Cascade Handcrafted Log Homes</p>	Design:	Snoqualmie	Area:	2,670 sq ft (248 m ²)
	Designed by:	RCM CAD Design	Features:	Part full-scribe, part post and beam. Large open floor plan. Balcony under knee-braced roof extension. Lots of gingerbread.
	Log Home Construction Style:	Hybrid		

Snoqualmie: Plan of 2nd floor



 <p>Cascade Handcrafted Log Homes</p>	Design:	Snoqualmie	Area:	2,670 sq ft (248 m ²)
	Designed by:	RCM CAD Design	Features:	Part full-scribe, part post and beam. Large open floor plan. Balcony under knee-braced roof extension. Lots of gingerbread.
	Log Home Construction Style:	Hybrid		